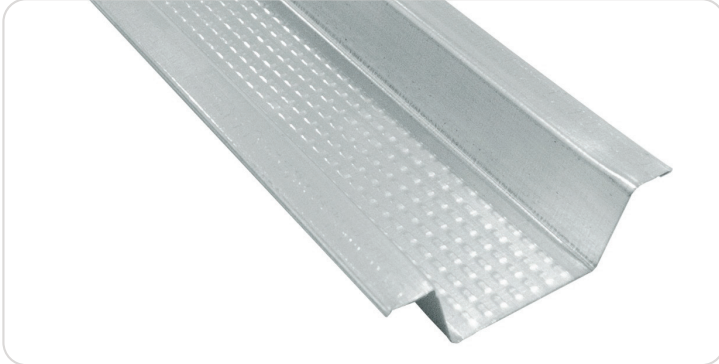


DRYWALLS SUSPENSION SYSTEMS

TECHNICAL DATA SHEET



Features and Benefits:



Corrosive resistance,
humidity resistance.



Safe, fast and simple to
install & easily accessible.



Environmentally friendly
and recyclable.

Product Specifications

Material	Hot Dipped Galvanized Iron comply with American ASTM A653M, According to EN ISO 6270-2 ,BS 476 Part 6 – 1989, BS 476 Part 7 – 1997. ASTM 644					
Thickness	0.35	0.4	0.45	0.5	0.6	up to 0.9 mm
	other thickness available upon request					
Fire Rating (Raw Material)	Fire propagation as per British Standard BS 476 Part 6 – 1989. Surface Flame Spread test Class 1 as per British Standard BS 476 Part 7 – 1997. Fire reaction class A1.					
Resistivity	Corrosive resistance/humidity resistance. Offers appropriate load carrying capacity for boards.					
Humidity Resistance (Raw Material)	Humidity resistance up to 1000 HRS According to EN ISO 6270-2.					

Applications

Installation of Gypsum plaster board for both ceilings and partition walls.



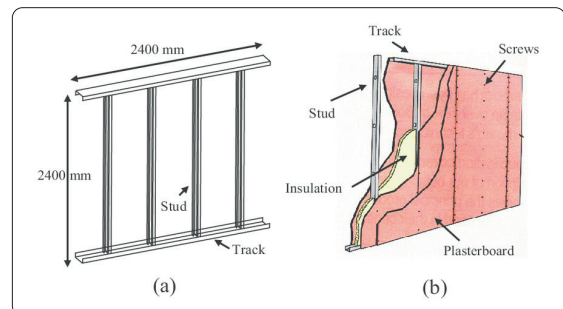
System Contents (Components)

For Ceilings:

1. Omega / C-Channel / L-Angle
2. Accessories

For Walls:

1. Stud & Runner.
2. Accessories



Supplier and Manufacturer: JAWDAH INDUSTRIAL COMPANY LTD.

Country of Origin: Kingdom of Saudi Arabia



JAWDAH

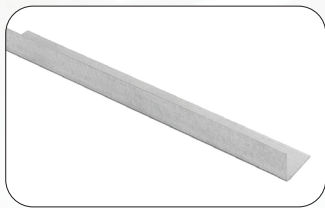
شركة جودة الصناعة المحدودة
Jawdah Industrial Co. Ltd.

Meed Building, Dabab Street, Riyadh, KSA
T: +966 11 216 6616 F: +966 11 216 6606
E: jawdah@jawdah.sa | www.jawdah.sa

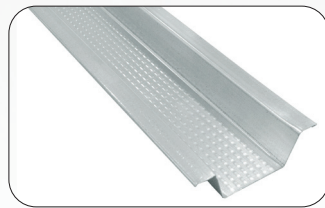
DRYWALLS SUSPENSION SYSTEMS

DryWalls Suspension Systems

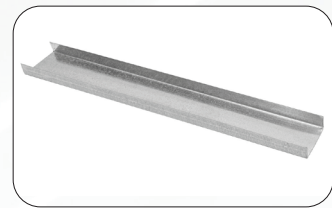
SYSTEM	ITEM	DIMENSION	LENGTH	THICKNESS	PHOTO
CEILINGS	L-ANGLE	24*24MM	3000MM	0.35 UP TO 0.9MM	
		25*25MM			
	FURRING CHANNEL	21*34*21MM	3000MM	0.35 UP TO 0.9MM	
	C-CHANNEL	12*38*12MM			
WALLS (partitions)	STUD	35*40*32MM	3000MM	0.35 UP TO 0.9MM	
		34*50*31.5MM			
		34*75*31.5MM			
		34*100*31.5MM			
	RUNNER	27*42*27MM	3000MM		
		24*52*24MM			
		24*77*24MM			
		24*102*24MM			



L-angle



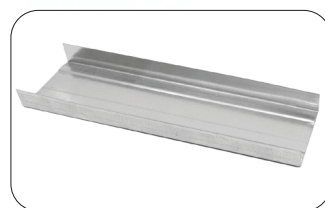
Furring Channel



C-channel



Stud



Runner